



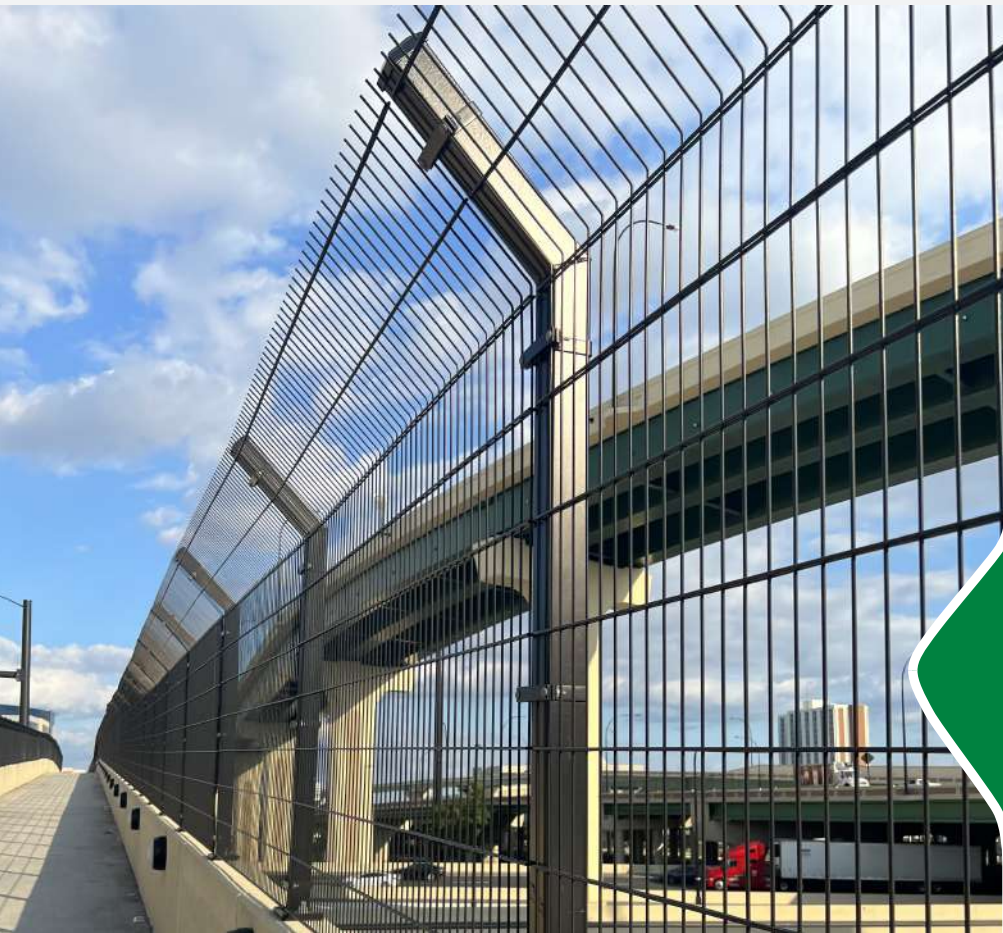
BUILDING A BEAUTIFUL WORLD, **ONE FENCE** AT A TIME



Need it strong?
Strong and beautiful?
Count on Designmaster!

INDEX

ABOUT US	01
SYSTEM BASICS	02
APPLICATIONS	03
CLASSIC	04
CONTEMPO	06
FORTE	08
MILAN	10
FLORENCE	12



STEEL FENCE SOLUTIONS

Designmaster Fence is changing the way America fences, with steel-strong commercial and residential fence for virtually every need, from maximum security to ornamental projects.

Our incomparable quality, product diversity, maintenance-free finishes and competitive pricing give you every reason to choose **Designmaster**. Our customer-centric attention to detail and a 25-year limited warranty ensure your satisfaction and peace of mind.

MIAMI DADE CERTIFIED

The strength and durability of steel merge with style and elegance to produce a fencing system that is **Miami-Dade** certified with the highest rating of any Welded Steel Wire Fencing System, High Velocity Hurricane Zone (HVHZ).

Miami-Dade certification is recognized worldwide as the standard for products that can withstand the most severe weather and wind loads.

NON-TOXIC POWDER COATING

The finish on all Designmaster Fence components is 100% free of Volatile Organic Compounds and Triglycidyl Isocyanurate, (both of which are known carcinogens). This makes Designmaster Fence the best choice for public areas, schools, daycare centers, zoos, parks, stadiums, and anyplace else where people or animals may contact the fence.



MIAMI-DADE COUNTY
APPROVED



SYSTEM BASICS

Designmaster Fence is an advanced fencing system that combines **beauty, functionality, safety, durability, and strength.**

CHARACTERISTICS

The Designmaster Fence system includes **panels, posts, brackets,** and all other **accessories.** Metal components are galvanized, treated with phosphate, and powder coated, providing **maximum protection against corrosion.**

STANDARDS

Complies with **ASTM-510** and passes the **Accelerated UV Weather Test G154-04** and Corrosion resistance of 1,000 hours of exposure. Fabricated in accordance with **NF-EN 10016-2** steel standards.

NON-TOXIC POWDER COATING

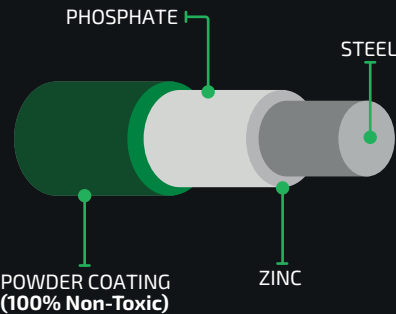
Designmaster Fence stands out with a lead free and no **Volatile Organic Compounds (VOC's)** product as the optimal option for public spaces, schools, daycare centers, zoos, parks, stadiums, and any location where there is potential for interaction between individuals or animals and the fence.

APPLICATIONS

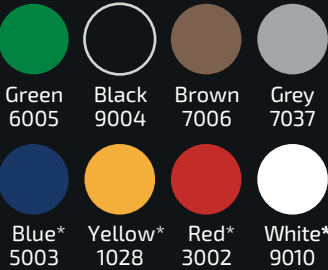
●●● IDEAL | ●● RECOMMENDED | ● ACCEPTABLE

APPLICATION	CLASSIC	MILAN	FLORENCE	CONTEMPO	FORTE
Amusement parks	●●●	●●●	●●	●●	●
Shopping Plazas	●●●	●●	●	●●●	●
Corporate Offices	●●	●●●	●●●	●●	●
Governmental Offices	●●	●	●●	●●●	●●●
Hotels	●●	●●●	●●●	●●	●
Industrial Areas	●●●	●	●	●●●	●●
Military Zones	●●	●	●	●●●	●●●
Parking Lots	●●●	●●	●	●●●	●●
Parks	●●●	●●	●●●	●	●
Playgrounds	●●	●●●	●●	●●●	●
Pools	●●●	●●	●	●●●	●
Prisons	●	●	●	●●●	●●●
Residential Areas	●●	●●●	●●●	●	●
Commercial Spaces	●●●	●●	●	●●●	●
Schools and Universities	●●●	●●	●●	●●●	●
Sports Complexes	●●●	●	●	●●●	●●
Vineyards	●●●	●●●	●●	●	●
Storage and Distribution Centers	●●	●	●	●●●	●●●
Zoos	●●	●●	●	●●●	●●●

COMPOSITION



COLORS



CLASSIC

CLEAR SEE-THROUGH DESIGN | TIMELESS BEAUTY
MID-LEVEL SECURITY STRENGTH

When beauty factors into perimeter security, **Classic's** stately elegance is an incomparable choice.

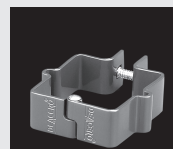
Difficult to climb or penetrate, made to last, and competitively priced, Classic's V-shaped braces along the length of each steel panel add lateral strength, and its adaptability to elevation and directional changes (120° swing) make this fence ideal for nearly any application.



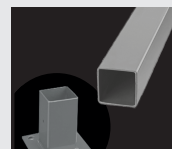
PANEL

HEIGHT	LENGTH	OPENING	STEEL BRACKET	GAUGE	WIRE TENSILE STRENGTH
25 3/8"	95 1/4"	2X6"	#2	6	80,000 - 110,000 PSI
43 4/4"	95 1/4"	2X6"	#2	6	80,000 - 110,000 PSI
62 3/16"	95 1/4"	2X6"	#3	6	80,000 - 110,000 PSI
73 1/4"	95 1/4"	2X6"	#4	6	80,000 - 110,000 PSI
98 1/6"	95 1/4"	2X6"	#5	6	80,000 - 110,000 PSI

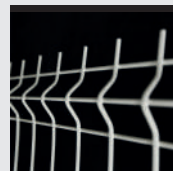
COMPONENTS



STANDARD
BRACKET



POST AND
POST BASE

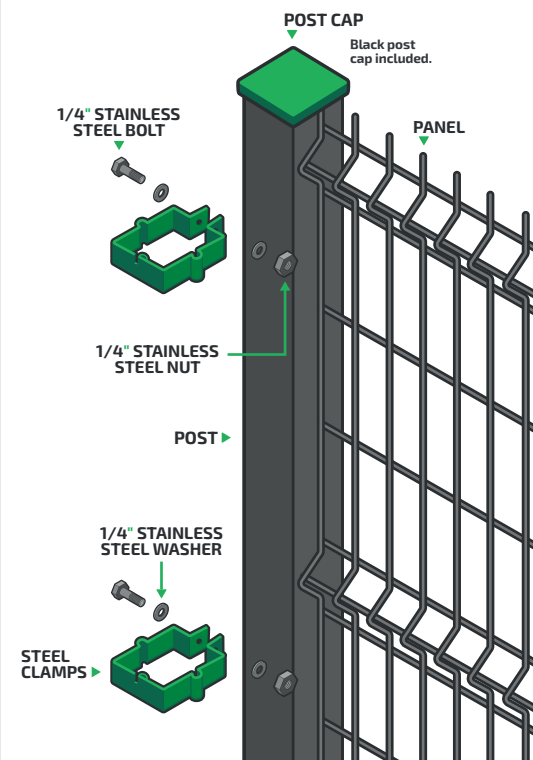


PANEL



45 ANGLED
EXTENSION
(OPTIONAL)

- Black post cap included.
- Post available in multiple sizes and lengths.
- V, T or 45-degree extensions available welded to post or add-on.
- Wire dimensions are center to center.



CONTEMPO

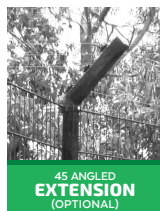
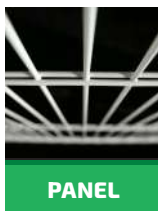
CLEAR SEE-THROUGH DESIGN | SIMPLE CONTEMPORARY
STYLE | HIGH-LEVEL SECURITY STRENGTH

When security matters, there's **Contempo**, designed to meet the toughest security challenges.

Difficult to climb or penetrate, made to last, and competitively priced, Contempo's 4-gauge vertical wires are sandwiched between two 1-gauge horizontal wires, making this fence an exceptional solution for even the highest levels of security, including multi-level and sloped installations.



INSTALLATION COMPONENTS



PANEL

DESIGN	HEIGHT	LENGTH	OPENING
HEAVY DUTY	48 1/2"	98 1/2"	2X8"
	72 1/16"	98 1/2"	2X8"
	95 3/4"	98 1/2"	2X8"
	119 1/4"	98 1/2"	2X8"

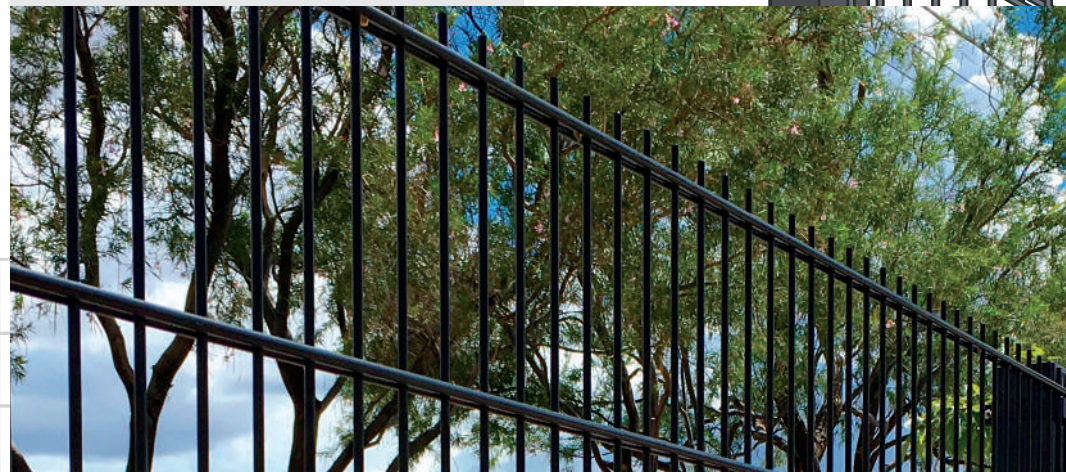
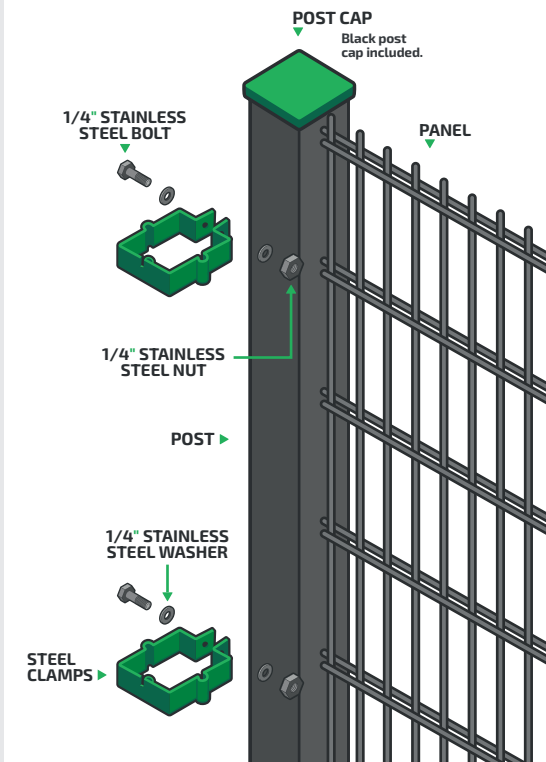
VERTICAL WIRE

DESIGN	WIRE TENSILE STRENGTH	GAUGE
HEAVY DUTY	75,000 - 105,000 PSI	4

DOUBLE HORIZONTAL WIRE

DESIGN	WIRE TENSILE STRENGTH	GAUGE
HEAVY DUTY	80,000 - 95,000 PSI	1

- Black post cap included.
- Posts are available in multiple sizes and lengths.
- V, T or 45-degree extensions available welded to post or add-on.
- Please consult one of our distributors for additional details.
- Wire dimensions are center to center.

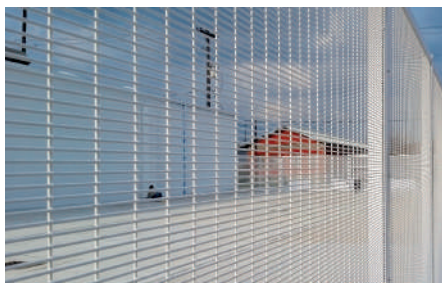


FORTE

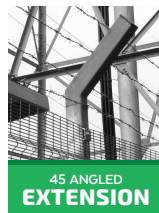
CLEAR SEE-THROUGH DESIGN | VIRTUALLY
IMPOSSIBLE TO PENETRATE OR CLIMB

Go ahead. Compare Forte with other high-security fencing. You'll find **Forte** delivers on every point.

When you need it strong, virtually impenetrable, made to last, and competitively priced; choose Forte's steel flat or V-braced panels, with optional cross bars and reinforcing brackets for maximum security, including multi-level and slope installations.



INSTALLATION COMPONENTS



FORTE V-BRACE

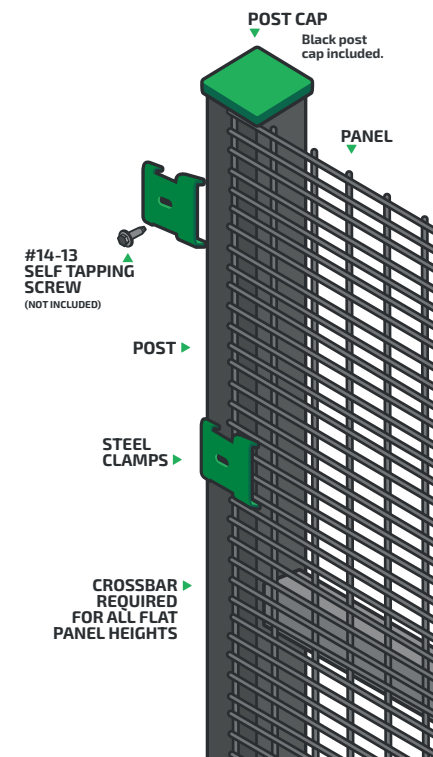
DESIGN	HEIGHT	LENGTH	GAUGE	OPENING
WITH V-BRACE	76 7/8"	99 1/8"	8	1/2 x 3"
	96"	99 1/8"	8	1/2 x 3"

FORTE MAX

DESIGN	HEIGHT	LENGTH	GAUGE	OPENING
FLAT	78 3/4"	99 1/8"	8	1/2 x 3"
	98 5/8"	99 1/8"	8	1/2 x 3"
	118 3/8"	99 1/8"	8	1/2 x 3"
	141 3/4"	99 1/8"	8	1/2 x 3"

WIRE TENSILE STRENGTH	OPENING
70,000 - 90,000 PSI	1/2 x 3"

- Crossbar system is recommended for Flat Panels. Two cross bars per panel are the minimum required, however three cross bars are recommended (top, middle, bottom).
- Post available in multiple sizes and lengths.
- Black post cap included.
- Self-tapping screw not included with bracket.
- V, T or 45-degree extensions available welded to post or add-on.
- Wire dimensions are center to center.



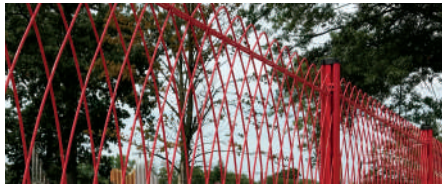
FLORENCE

CLEAR SEE-THROUGH DESIGN | BEAUTIFUL & SLEEK
NO PINCH-POINTS | AESTHETIC & SECURE

Sometimes, aesthetics are as important, or more so, than security. And for that, there's Florence's graceful, arching steel panels, adding elegant security to all it surrounds.

Difficult to climb, made to last, and competitively priced, Florence sets the standard for beautiful, secure fencing solutions.

Florence is so exquisite, it's hard to believe she's steel!



PANEL

HEIGHT	LENGTH	GAUGE
31 1/8"	96 1/16"	4
47 1/4"	96 1/16"	4

WIRE TENSILE STRENGTH

75,000 - 105,000 PSI

- Black post cap included.
- Posts available in multiple lengths.
- Please consult one of our distributors for additional details.
- Wire dimensions are center to center.

POST CAP
Black post cap included.

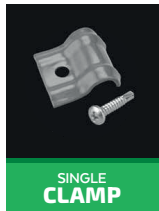
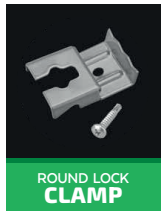
POST

ROUND LOCK CLAMP
WITH 1/4-14 STAINLESS
STEEL SCREW

SINGLE CLAMP WITH
1/4-14 STAINLESS
STEEL SCREW

ROUND LOCK CLAMP
WITH 1/4-14 STAINLESS
STEEL SCREW

INSTALLATION COMPONENTS

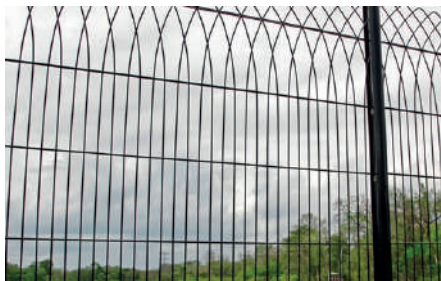


MILAN

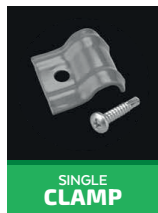
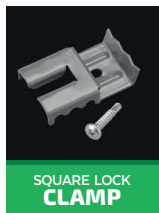
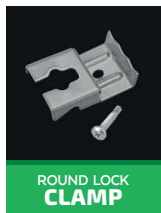
**CLEAR SEE-THROUGH DESIGN | BEAUTIFUL & SLEEK
NO PINCH-POINTS | AESTHETIC & SECURE**

For solutions that demand equal parts beauty and security, choose Milan's steel panels, topped with horizontally reinforced sleek arches.

Extremely difficult to climb, made to last, and competitively priced, Milan is the perfectly beautiful choice for medium security projects.



INSTALLATION COMPONENTS



PANEL

HEIGHT	LENGTH	GAUGE
62 5/8"	87 3/8"	4
82"	87 3/8"	4

WIRE TENSILE STRENGTH

75,000 - 90,000 PSI

- Black post cap included.
- Posts available in multiple lengths.
- Please consult one of our distributors for additional details.
- Wire dimensions are center to center.

POST CAP
Black post cap included.

POST

ROUND LOCK CLAMP WITH 1/4-14 STAINLESS STEEL SCREW

SQUARE LOCK CLAMP WITH 1/4-14 STAINLESS STEEL SCREW

SINGLE CLAMP WITH 1/4-14 STAINLESS STEEL SCREW

SINGLE CLAMP WITH 1/4-14 STAINLESS STEEL SCREW

SQUARE LOCK CLAMP WITH 1/4-14 STAINLESS STEEL SCREW





designmasterfence.com

8411 Irvington Blvd. Ste B

Houston, TX 77022

