

# FORTE

Clearly tough  
& secure.



**CLEAR** see-through security

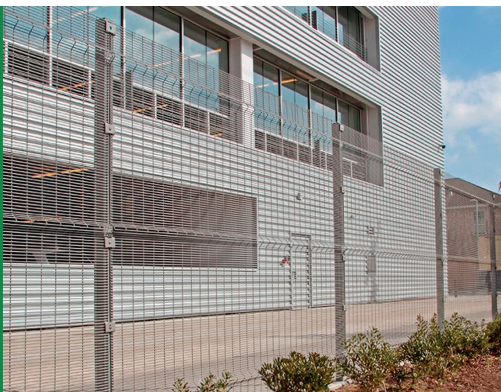
**TOUGH** virtually impossible  
to penetrate or climb

**SECURE** enough for the  
highest levels of protection



Go ahead. Compare Forte with other high-security fencing.  
You'll find **Forte delivers on every point.**

When you need it strong, virtually impenetrable, made to last and competitively priced, choose Forte's **steel flat or v-braced panels, with optional cross bars and reinforcing brackets for maximum security**, including multi-level and slope installations.



Security Rating: MAXIMUM

## SECURITY SOLUTIONS

Critical Infrastructure  
Chemical & Industrial Plants  
Military Bases  
Federal & State Buildings  
Municipal Buildings  
Places of Worship  
Transportation  
Correctional Facilities  
Embassies  
Storage Facilities  
Warehouses  
Distribution Facilities

## PANEL

Design	Height	Length	Gauge		Post Height
	in	in	cal.	mm	in
With V-Brace	76 3/4	100 13/16	8	4	106 5/16
	96 7/8	100 13/16	8	4	126
Flat	79 3/16	100 13/16	8	4	106 5/6
	99 1/4	100 13/16	8	4	126
	118 11/16	100 13/16	8	4	146
	142 1/4	100 13/16	8	4	170

Wire Breaking Load	Opening	
psi	in	cm
70,000 – 90,000	1/2 X 3	7.62 X 1.27

Posts are available in multiple sizes and lengths.

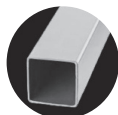
Available with an angled extension.

Please consult one of our Distributors for additional details

## INSTALLATION COMPONENTS



Universal Bracket



Post

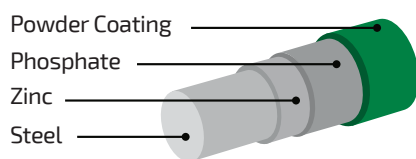


Clamp



45° Angled Extension

## COMPOSITION



25-year limited warranty on all components | Meets ASTM-510

## FORTE COLORS RAL CODES



Green 6005



Black 9004



Brown 7006



White 9010



Blue 5003



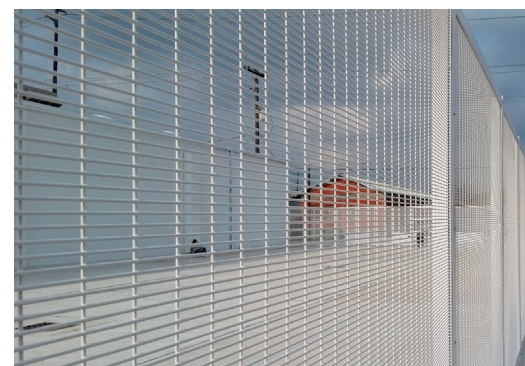
Yellow 1028



Red 3002



Grey 7037



Building a beautiful world, one fence at a time.

8411 Irvington Blvd . Ste B | Houston, TX 77022 | sales@designmasterfence.com | designmasterfence.com

