

MILAN

Clearly a beautiful
perimeter
solution



CLEAR see-through design

BEAUTIFUL & SLEEK

no pinch-points

PERIMETER-PERFECT

aesthetics & security

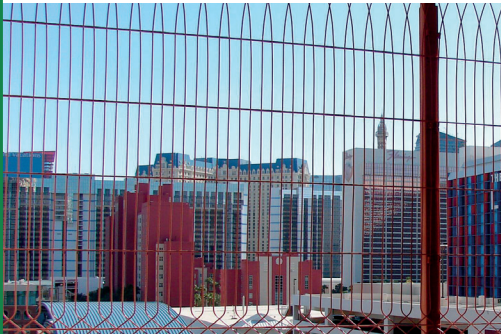


For solutions that demand equal parts beauty and security, choose Milan's **steel panels, topped with horizontally-reinforced sleek arches.**

Almost impossible to climb, made to last and competitively priced, Milan is **the perfectly beautiful choice for medium-security projects.**



Security Rating: MEDIUM



SECURITY SOLUTIONS

- Amusement Parks
- Botanical Gardens & Zoos
- Parks & Playgrounds
- Schools & Universities
- Parking Garages
- Public Spaces
- Hotels & Resorts
- Businesses & Corporations
- Apartment Complexes
- Residential Property

PANEL

Height		Length		Gauge	
in	in	cal.	mm	in	in
62	15/16	87	3/8	4	6
81	7/8	87	3/8	4	6

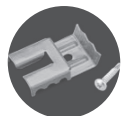
Wire Breaking Load	Wire Tension Strength
psi	lbs (min)
55,000 - 70,000	2500

Posts are available in multiple sizes and lengths.
Please consult one of our Distributors for additional details

INSTALLATION COMPONENTS



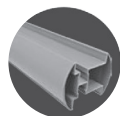
Round Lock Clamp



Square Lock Clamp

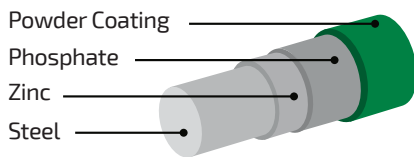


Single Clamp



Extruded Aluminum Posts

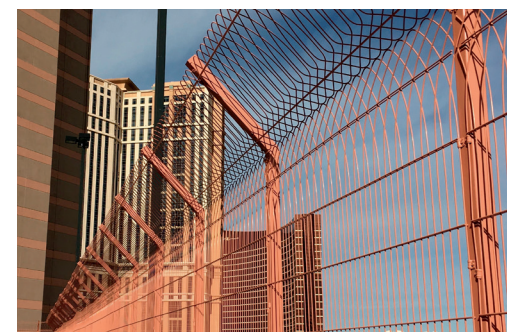
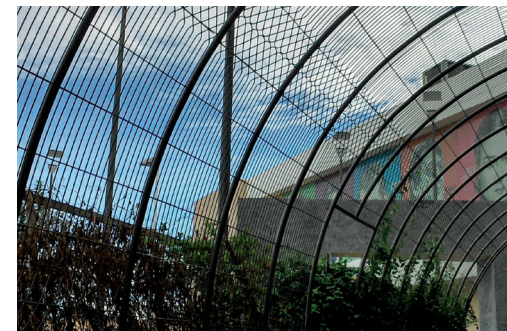
COMPOSITION



25-year limited warranty on all components | Meets ASTM-510

MILAN COLORS RAL CODES

Green 6005	Black 9004	Brown 7006	White 9010
Blue 5003	Yellow 1028	Red 3002	Grey 7037



Building a beautiful world, one fence at a time.

8411 Irvington Blvd . Ste B | Houston, TX 77022 | sales@designmasterfence.com | designmasterfence.com

