

FLORENCE

Clearly designed
for elegant
perimeters



CLEAR see-through design

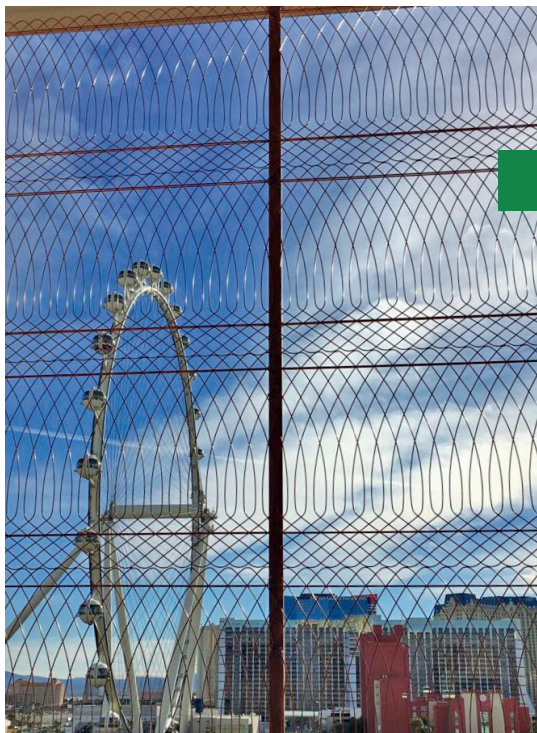
ELEGANT lines
no pinch-points

PERIMETERS that make
a statement



Sometimes, aesthetics are as important, or more so, than security. And for that, there's Florence's **graceful, arching steel panels, adding elegant security** to all it surrounds.

Difficult to climb, made to last and competitively priced, Florence sets the **standard for beautiful, secure fencing solutions.**



Security Rating: STANDARD

SECURITY SOLUTIONS

Amusement Parks
Botanical Gardens & Zoos
Parks & Playgrounds
Schools & Universities
Public Spaces
Hotels & Resorts
Businesses & Corporations
Apartment Complexes
Communities
Residential Property

PANEL

Height	Length	Gauge	
in	in	cal.	mm
31 1/2	96 1/16	4	6
47 1/4	96 1/16	4	6

Wire Breaking Load	Wire Tension Strength
psi	lbs (min)
55,000 - 70,000	2500

Posts are available in multiple sizes and lengths.

Please consult one of our Distributors for additional details

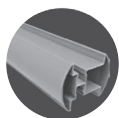
INSTALLATION COMPONENTS



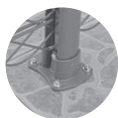
Round Lock
Clamp



Single
Clamp

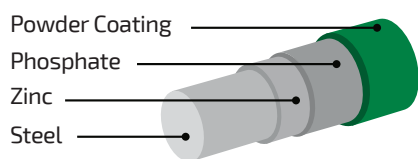


Extruded
Aluminum Posts



Base Mount

COMPOSITION



25-year limited warranty on all components | Meets ASTM-510

FLORENCE COLORS

RAL CODES



Green
6005



Black
9004



Brown
7006



White
9010



Blue
5003



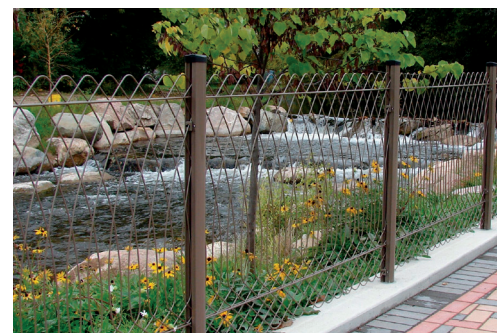
Yellow
1028



Red
3002



Grey
7037



Building a beautiful world, one fence at a time.

8411 Irvington Blvd . Ste B | Houston, TX 77022 | sales@designmasterfence.com | designmasterfence.com

