

CLASSIC

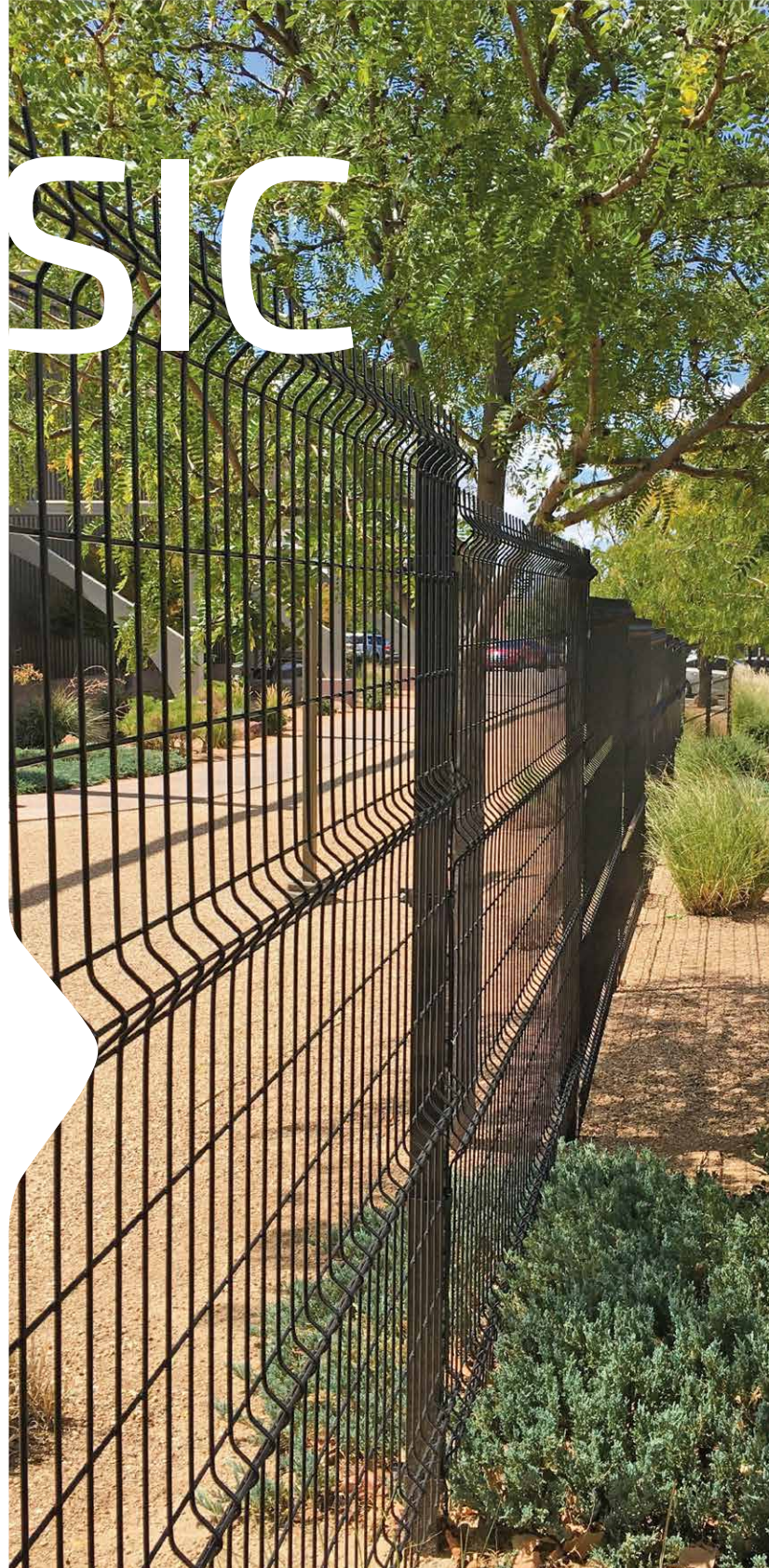
Clearly built for
timeless beauty
& strength.



CLEAR see-through design

TIMELESS classic beauty

STRENGTH for mid-level
security



When beauty factors into perimeter security, Classic's stately elegance is an incomparable choice. Difficult to climb or penetrate, made to last and competitively priced, Classic's v-shaped braces along the length of each steel panel add lateral strength, and its adaptability to elevation and directional changes (120° swing) make this fence ideal for nearly any application.





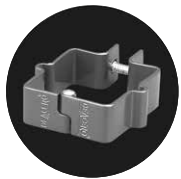
Security Rating: MEDIUM

PANEL

Height	Length	Opening	Steel Bracket	Gauge	Wire Breaking Load	Weld-Shear Strength
in	in	in	#	cal.	psi	lbs
25 3/8	95	2 x 6	2	6	80,000 - 100,000	1,051
48 7/8	95	2 x 6	2	6	80,000 - 100,000	1,051
62 1/16	95	2 x 6	3	6	80,000 - 100,000	1,051
73 5/16	95	2 x 6	4	6	80,000 - 100,000	1,051
97 7/8	95	2 x 6	5	6	80,000 - 100,000	1,051

Posts are available in multiple sizes and lengths.
Available with an angled extension.
Please consult one of our Distributors for additional details.

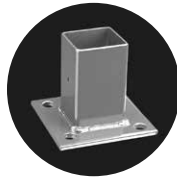
INSTALLATION COMPONENTS



Standard Bracket



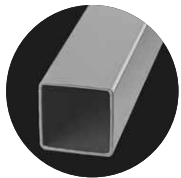
Universal Bracket



Base Mount
(Not recommended for panels over 5' H)



45° Angled Extension

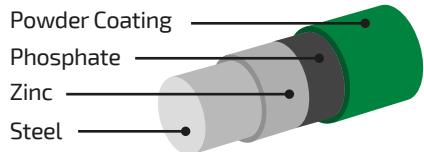


Post



Clamp

COMPOSITION



25-year limited warranty on all components | Meets ASTM-510

COLORS RAL CODES



Green
6005



Black
9004



Brown
7006



White
9010



Blue
5003



Yellow
1028



Red
3002



Grey
7037

SECURITY SOLUTIONS

- Public Works / Public Spaces
- Businesses & Corporations
- Schools & Universities
- Amusement Parks
- Daycare Centers
- Sports Complexes
- Botanical Gardens & Zoos
- Parks, Playgrounds & Pools
- Places of Worship
- Apartment Complexes
- Hotels & Resorts
- Transportation
- Communities
- Residential Property
- Warehouses
- Distribution Facilities

